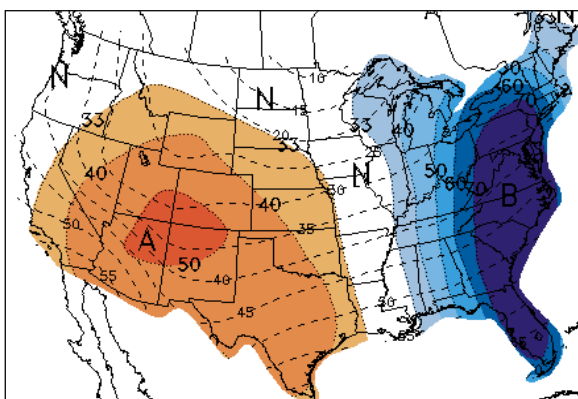


## NYMEX Commodities

	12/08	12/01	Δ	Year Ago
Crude Oil, Jan. 2010	\$88.28	\$86.75	\$1.53	\$70.67
Natural Gas, Jan. 2010	\$4.61	\$4.27	\$0.34	\$4.90
Gas (RBOB), Jan. 2010	\$2.30	\$2.30	\$0.00	\$1.86
Heating Oil, Jan. 2010	\$2.46	\$2.41	\$0.06	\$1.91

## Platts-ICE Forward Curve, Electricity

Prompt: Jan. 2010	12/08	12/01	Δ	Year Ago
Mass. Hub	\$59.50	\$61.00	(\$1.50)	\$67.00
N.Y. Zone G	\$61.50	\$62.50	(\$1.00)	\$69.00
PJM West	\$49.65	\$48.65	\$1.00	\$54.50
ERCOT	\$36.00	\$35.00	\$1.00	\$42.25



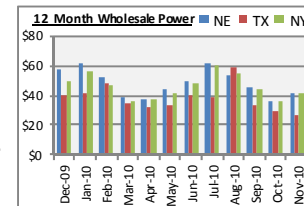
NOAA 6 to 10 Day Outlook: Color indicates the probability of forecasted temperatures being above or below a historical average for the period.

## NYMEX Natural Gas Strip Averages

Prompt: Dec. 2010	12/08	12/01	Δ
Q1 2011	\$4.59	\$4.26	\$0.33
Summer '11	\$4.62	\$4.38	\$0.25
Winter '10-'11	\$4.61	\$4.26	\$0.34
Cal. Yr. 2011	\$4.69	\$4.49	\$0.20
Cal. Yr. 2012	\$5.14	\$5.08	\$0.06
Cal. Yr. 2013	\$5.40	\$5.40	\$0.00
12 Months	\$4.69	\$4.41	\$0.28
24 Months	\$4.92	\$4.73	\$0.19
36 Months	\$5.08	\$4.94	\$0.13

## Natural Gas Futures Drop as Report Shows Ample Winter Supplies

Natural gas futures fell from a four month high as a government report showed adequate supplies of the heating fuel for the cold-weather months. Stockpiles dropped 89 billion cubic feet in the week ended Dec. 3 to 3.725 trillion cubic feet, the Energy Department said today. Inventories were 9.8 percent above five year average. Analysts estimated declines ranging from 71 billion to 108 billion cubic feet. Natural gas for January delivery fell 4.4 cents, or 1 percent, to \$4.562 per million British thermal units at 10:53 a.m. on the New York Mercantile Exchange. Gas was trading at \$4.584 before the report was released at 10:30 a.m. in Washington. The number of U.S. gas drilling rigs rose to 961 in the week ended Dec. 3, according to data published by Baker Hughes Inc. The rig count was 28 percent higher than a year earlier.



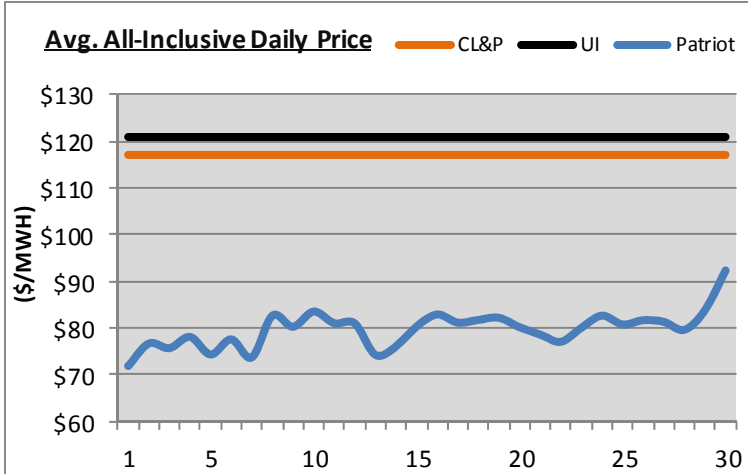
Temperatures will be below average next week across the eastern U.S., according to the National Weather Service. New York will have a low of 17 degrees Fahrenheit on Dec. 14, 15 degrees below normal, according to AccuWeather Inc. Chicago will have a low of 14 degrees, 9 degrees below normal. About 52 percent of U.S. households use natural gas for heating, according to the Energy Department. *Patriot Energy encourages all clients to assess their exposure to energy markets to determine if now is an opportune time to extend contracts or develop forward looking strategies given unique business circumstances. Regardless of one's view on whether energy prices will rise or fall, all should determine if there is an opportunity to save money to mitigate risk. Contact your account Representative to explore all current offers and discuss market conditions.*

## Crude Oil Rises for First Day in Three as Recovery Trims Supply Excess

Oil rose for the first time in three days on signs that the economic recovery is gathering strength and reining in excess fuel inventories. Futures gained after data showed Japan's economy grew more than initially estimated in the third quarter and a government report showed initial jobless claims fell last week. The Energy Department said yesterday crude stockpiles held by the world's biggest oil consumer declined almost three times more than forecast. The Organization of Petroleum Exporting Countries will review production quotas at the end of the week. Crude for January delivery rose as much as \$1.14, or 1.3 percent, to \$89.42 a barrel in electronic trading on the NYMEX. The contract was at \$88.41 at 1 p.m. London time. The number of workers filing first-time claims for unemployment insurance payments fell last week in the U.S., showing the labor market continues to improve. Applications for jobless

benefits decreased to 421,000, in line with the median forecast of economists, from a revised 438,000 the prior week, Labor Department figures showed. Crude climbed to \$90.76 a barrel on Dec. 7, the highest intraday price since October 2008. OPEC, which pumps about 40 percent of the world's crude, will keep production targets unchanged as oil rises toward \$100 a barrel, according to Shokri Ghanem, chairman of Libya's National Oil Corp. The 12 member group will probably agree on a quota extension and focus on discussing output compliance when it meets Dec. 11 in Quito, Ecuador, Ghanem said yesterday. Oil will climb to \$100 "pretty soon" and once that happens, group members may alter their production strategy, he said. Prices "are not reacting to supply and demand," Qatar's Energy Minister Abdullah bin Hamad al-Attiyah said in an interview. Inventories are at record levels and the economic recovery has been choppy, he said.

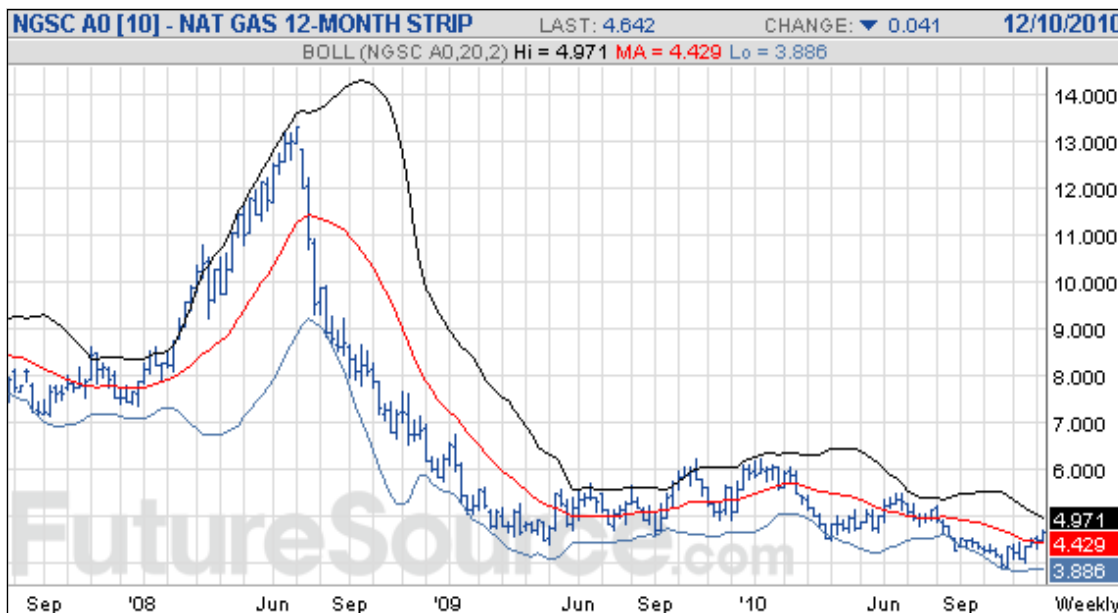
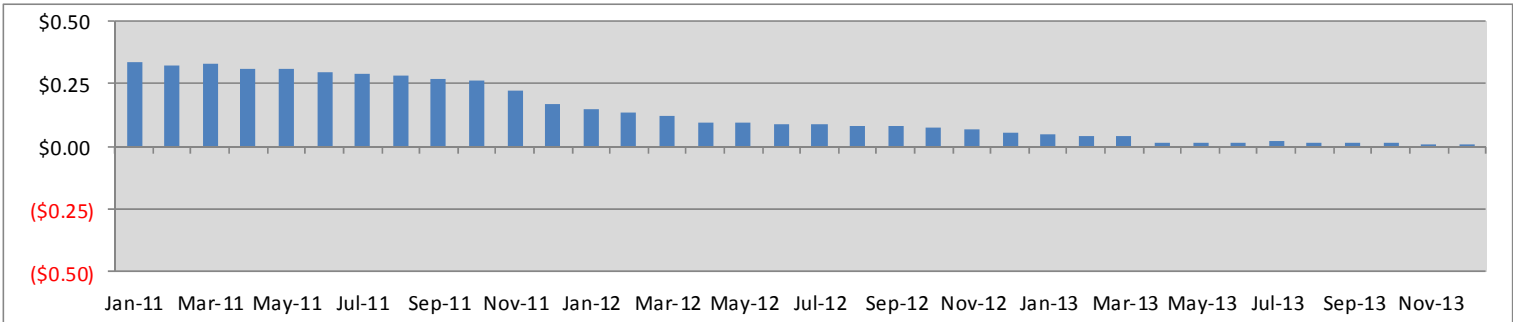
## Connecticut - November Wholesale Electricity Tracker



The cost of wholesale electricity remained aggressive in November, settling near the yearly low as electric demand was low with moderate temperatures. The cost of natural gas, which may have bottomed last month at a 14 month low, gained eight percent in November in anticipation of the winter heating season despite record-breaking storage levels. Looking forward to December, the cost of wholesale electricity has historically gained along with the market price of natural gas, as gas is the marginal source fuel for New England and much of the Northeast. The natural gas and electric markets will react accordingly to weather patterns.

## NYMEX Natural Gas Week-to-Week Price Change

Prices from NYMEX close 12/01 to NYMEX close on 12/08



### Patriot Energy Office Locations

#### MASSACHUSETTS

10 Tower Office Park, Suite 315  
Woburn MA, 01801

201 Westfield Street, 2nd Floor  
West Springfield MA, 01089

#### PENNSYLVANIA

3540 North Progress Ave, Ste. 203  
Harrisburg, PA 17110

#### TEXAS

Midway Tower  
4230 LBJ Freeway, Suite 612  
Dallas TX, 75244

#### CONNECTICUT

45 Church Street  
Stamford CT, 06906