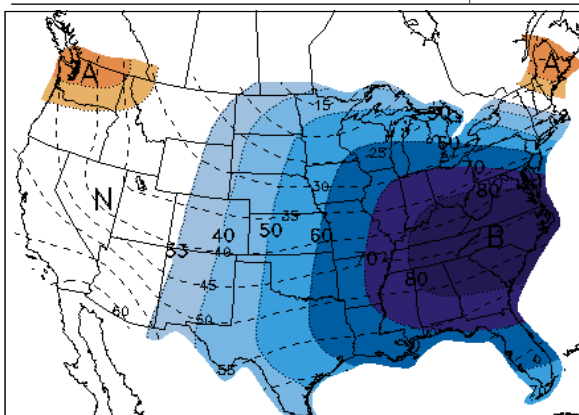


## NYMEX Commodities

	02/17	02/10	Δ	Year Ago
Crude Oil, Mar. 2010	\$77.33	\$74.52	\$2.81	\$34.93
Natural Gas, Mar. 2010	\$5.39	\$5.29	\$0.10	\$4.20
Gas (RBOB), Mar. 2010	\$2.01	\$1.93	\$0.08	\$1.11
Heating Oil, Mar. 2010	\$2.01	\$1.95	\$0.06	\$1.19

## Platts-ICE Forward Curve, Electricity

Prompt: Mar. 2010	02/17	02/10	Δ	Year Ago
Mass. Hub	\$54.50	\$55.75	(\$1.25)	\$51.00
N.Y. Zone G	\$58.25	\$60.00	(\$1.75)	\$55.25
PJM West	\$50.75	\$51.50	(\$0.75)	\$48.00
ERCOT	\$44.00	\$43.50	\$0.50	\$35.00

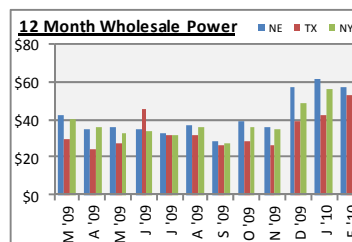


## NYMEX Natural Gas Strip Averages

	02/17	02/10	Δ
Q2'10	\$5.42	\$5.35	\$0.07
Summer '10	\$5.60	\$5.56	\$0.04
Winter '10-'11	\$6.45	\$6.46	(\$0.01)
Cal. Yr. 2010	\$5.65	\$5.60	\$0.05
Cal. Yr. 2011	\$6.14	\$6.22	(\$0.08)
Cal. Yr. 2012	\$6.29	\$6.42	(\$0.13)
12 Months	\$5.80	\$5.76	\$0.04
24 Months	\$5.99	\$6.02	(\$0.03)
36 Months	\$6.11	\$6.18	(\$0.07)

## Natural Gas Tumbles on Large Supplies, EIA Data

Natural gas prices tumbled more than 4 percent Thursday after the U.S. government said supplies are still higher than average despite a rash of snowstorms that blanketed the East Coast during the past few weeks. Natural gas is used to both heat homes and power electric generators, and supplies generally drop in the winter as homeowners crank up the heat. The EIA said natural gas stores did fall last week. However the remaining supply of 2.03 trillion cubic feet is still nearly 3 percent higher than the five-year average. Natural gas lost 23.5 cents at \$5.151 per 1,000 cubic feet in trading on the NYMEX. With the winter more than half over, analysts believe natural gas prices were headed lower with the assumption that there's a lot of storage capacity and many untapped wells that could easily be brought online. The EIA



said in a separate report that supplies of distillates, including diesel fuel and heating oil, fell almost twice as much as expected last week due in part to a plunge in imports of those fuels. Through the 17th of February the average LMP cost in New England settled at \$57.10 per MWH while New York pricing cleared at \$48.84 per MWH. MCPE prices in Texas settled at \$52.81 per MWH. Patriot Energy Group encourages all clients to assess their exposure to energy markets to determine

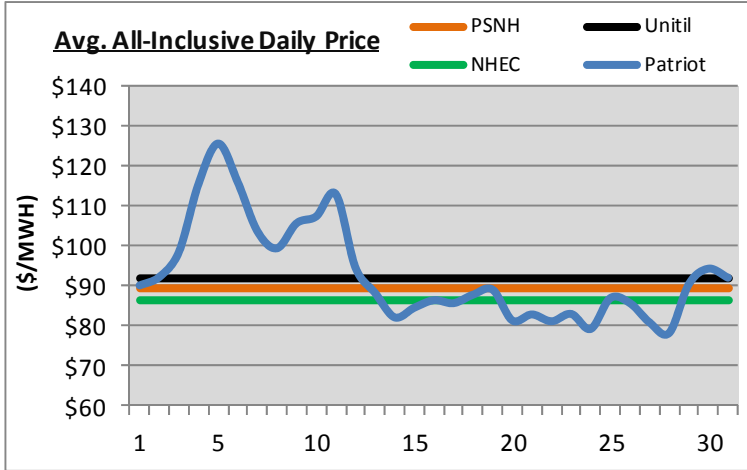
if now is an opportune time to extend contracts or develop forward looking strategies given business circumstances. Regardless of one's view on whether energy prices will rise or fall, all should determine if there is an opportunity to save money to mitigate risk. Contact your Account Representative to explore all current opportunities.

## Obama Administration Pushes Forward with Nuclear Power

The Obama administration pushed nuclear power a step forward Tuesday when it announced an \$8.3 billion loan guarantee to Southern Co.'s Georgia Power to begin building the first new nuclear reactors in the U.S. since the 1970s. Southern Co. plans to build a pair of AP1000 units designed by Toshiba's Westinghouse subsidiary. In a speech that coincided with the loan guarantee announcements, President Obama pledged his support for the construction of a new generation of nuclear power plants. "To meet our growing energy needs and prevent the worst consequences of climate change, we'll need to increase our supply of nuclear power," the president said to the crowd gathered at the headquarters of the International Brotherhood of Electrical Workers in Lanham, Md. Obama touted the new project with a price tag of \$14 billion as likely to create thousands of construction jobs and 800 permanent

jobs. He reiterated his intention to triple federal loan guarantees to \$54 billion. The President acknowledged that the U.S. has a lot of catching up to do in joining the nuclear renaissance. "Japan and France have long invested heavily in this industry. Meanwhile, there are 56 nuclear reactors under construction around the world: 21 in China alone, 6 in South Korea, 5 in India," he said. What's more, he said, "This one plant, for example, will cut carbon pollution by 16 million tons each year when compared to a similar coal plant. That's like taking 3.5 million cars off the road." One small hitch, however. The Nuclear Regulatory Commission said last year that the AP1000 nuclear units needed to be redesigned because the commission feared the structure wouldn't stand up to strong winds. Nuclear opponents argue this is one sign that the country is headed down a path it knows too well - regulatory and construction delays that make nukes woefully uneconomical.

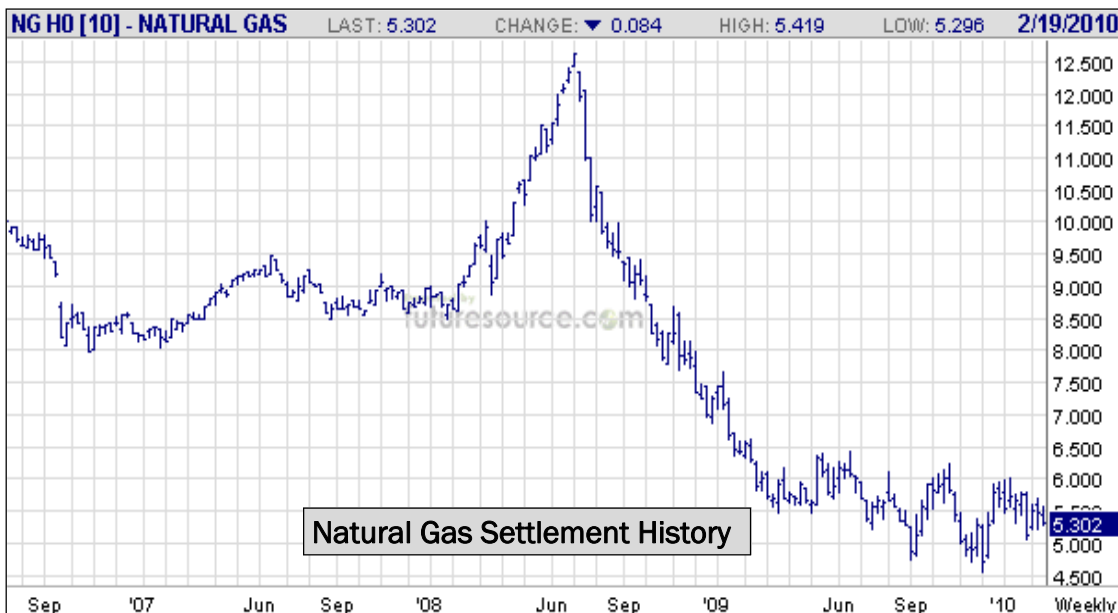
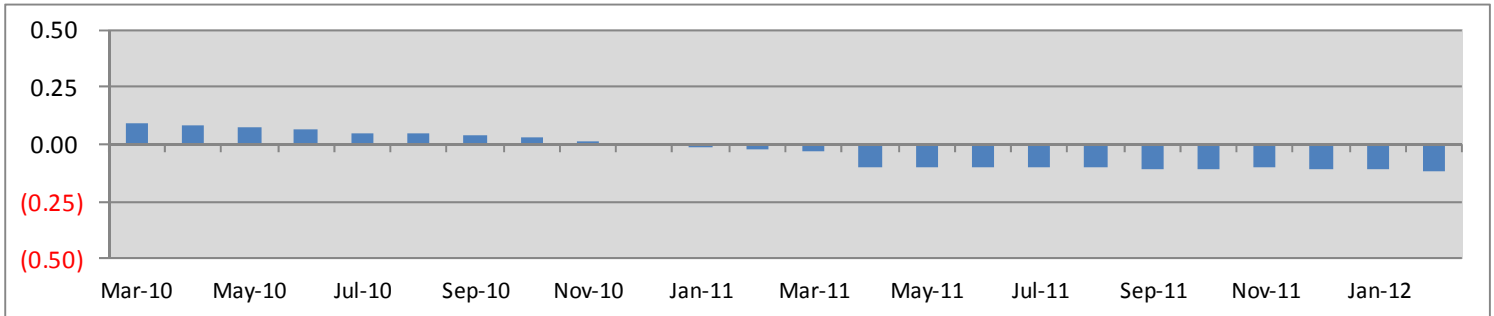
## New Hampshire - January Wholesale Electricity Tracker



Wholesale electric costs in January were slightly higher than the December '09 settlement. Market power pricing decreased in the back-half of January after cold temperatures initially drove up costs earlier in the month. The NOAA is calling for an equal chance of above or below average temperatures in February. Although the possibility of colder than average temperatures and higher wholesale costs remains, historically the cost of power has fallen in February in comparison to the January settlement. This is positive news for wholesale electric consumers as mild weather and the likelihood of reduced costs nears as we enter the Spring "shoulder season", typically when costs are at their lowest.

## NYMEX Natural Gas Week-to-Week Price Change

Prices from NYMEX close 02/10 to NYMEX close on 02/17



### Patriot Energy Office Locations

#### MASSACHUSETTS

10 Tower Office Park, Suite 315  
Woburn MA, 01801  
P: 781-376-1888  
F: 781-376-0519

201 Westfield Street, 2nd Floor  
West Springfield MA, 01089  
P: 413-732-0272  
F: 413-736-1904

#### TEXAS

Midway Tower  
4230 LBJ Freeway, Suite 612  
Dallas TX, 75244  
P: 972-404-1900  
F: 972-239-2211

#### CONNECTICUT

45 Church Street  
Stamford CT, 06906  
P: 203-973-0620  
F: 203-357-0779